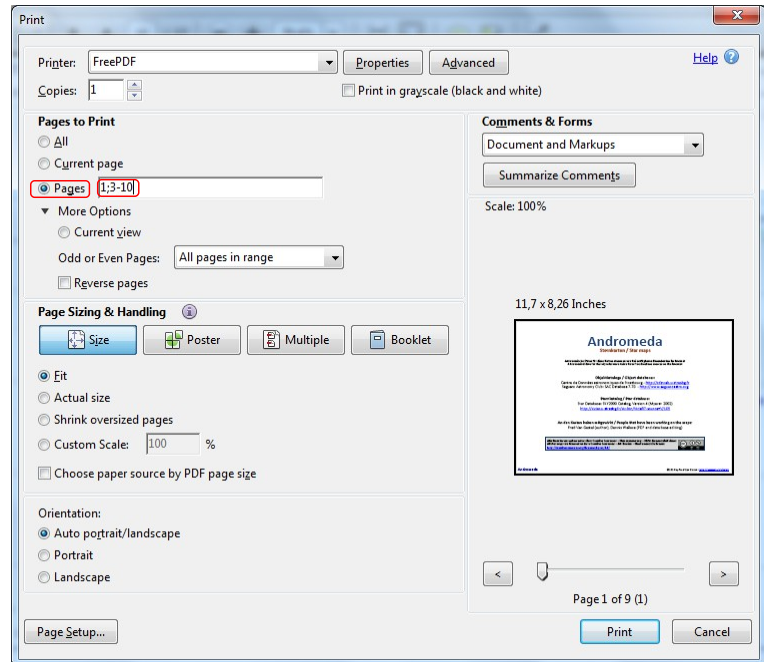


How to print 9^m0 star maps

1.

- click on **Pages**
- set the input field to **1;3-x** (x last page with a star map)
- Print**



2.

- then take the last printed page away
- turn the rest of the pages by 180° and put it back into the paper tray (Printed side down)

3.

- click **Pages**
- set the input field to **2;x-** (x is the first page with an object list)
- click on **Reverse pages**
- Print**

